

## KITCHEN FAUCETS

- Trask™ Collection
- Single Handle Pull-Down

### FEATURES:

- Touch<sub>2</sub>O® Technology
- DIAMOND Seal® Technology
- MagnaTite® Magnetic Docking
- Touch-Clean® Sprayhead
- Quick Snap® Connect Hoses

### STANDARD SPECIFICATIONS:

- Maximum flow rate 1.8 GPM @ 60 PSI, 6.8 L/Min @ 414 kPa.
- One, two, three, or four hole mount (escutcheon included).
- Diamond coated ceramic cartridge.
- 3/8" (10 mm) O.D. straight, staggered PEX supply tubes.
- Spout rotates 360°.
- Red/blue markings indicate hot/cold temperature.
- Two-function wand; aerated stream or spray.
- Dual integral check valves in sprayer.
- LED indicator light signals on/off, water temperature, and low batteries.
- Uses six AA (included) or six C (optional) batteries.
- Optional (EP73954) 120V AC adapter (three-prong grounded outlet required).

### WARRANTY:

- Lifetime limited warranty on parts (other than electronic parts and batteries) and finishes; or, for commercial users, for 5 years from date of purchase.
- 5 year limited warranty on electronic parts (other than batteries); or, for commercial users, for 1 year from the date of purchase. No warranty is provided on batteries.

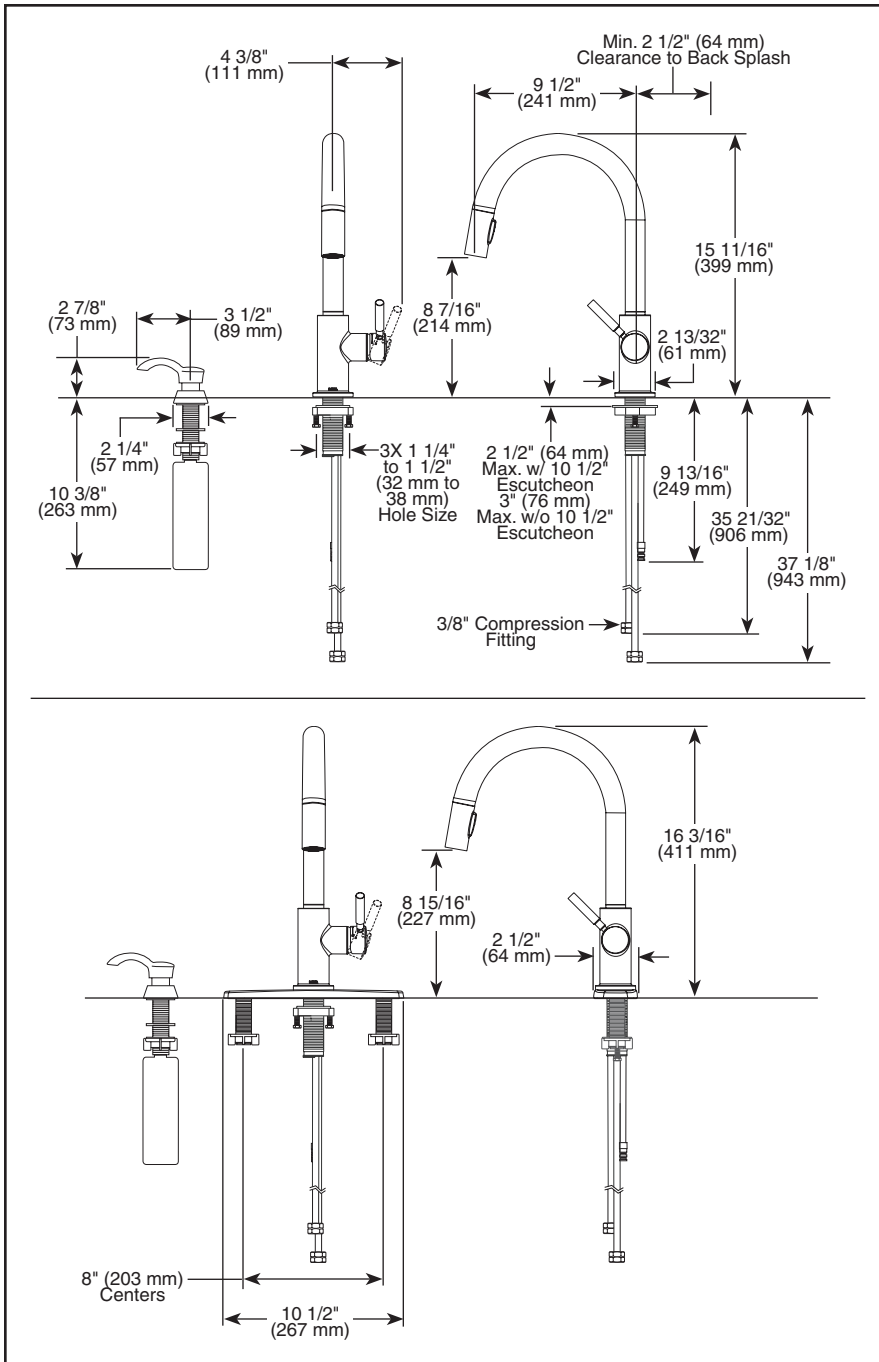
### COMPLIES WITH:

- ♿ Indicates compliance to ICC/ANSI A117.1
- "LF" models verified compliant with .25% weighted average Pb content regulations.

▲ Designate proper finish suffix

Submitted Model No.: \_\_\_\_\_

Specific Features: \_\_\_\_\_



Delta reserves the right (1) to make changes in specifications and materials, and (2) to change or discontinue models, both without notice or obligation. Dimensions are for reference only. See current full-line price book or [www.deltafaucet.com](http://www.deltafaucet.com) for finish options and product availability.

DSP-K-19933T-SD-DST Rev. A



55 E. 111th Street, Indianapolis, Indiana 46280  
350 South Edgeware Road, St. Thomas, ON N5P 4L1  
© 2015 Mascó Corporation of Indiana