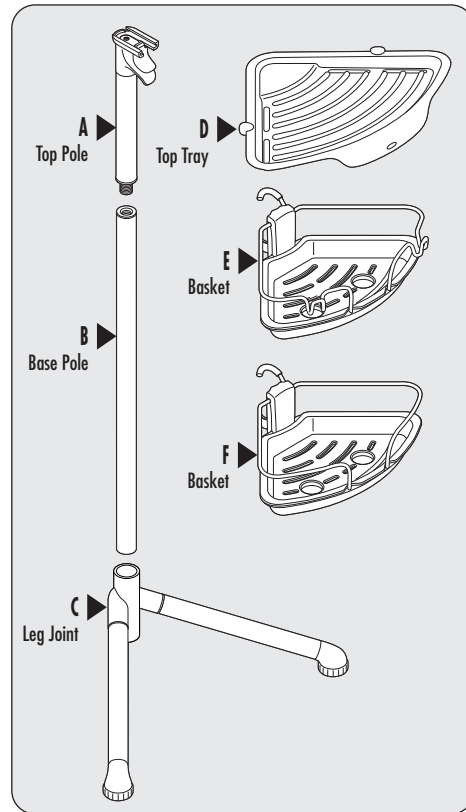


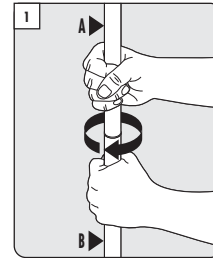
INSTRUCTIONS FOR USE

Slide & Lock Standing Shower Caddy

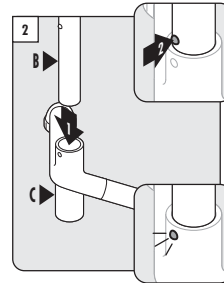
INCLUDES



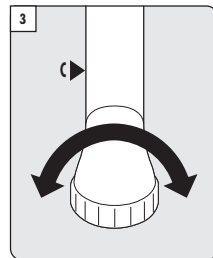
INSTALLATION INSTRUCTIONS



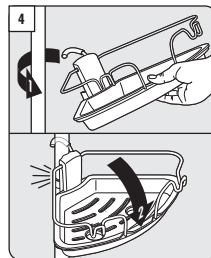
Twist together Top Pole (A) and Base Pole (B).



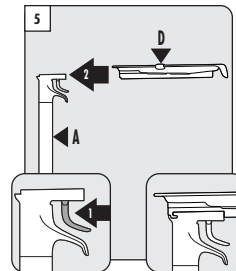
Insert Base Pole (B) into Leg Joint (C). Press button to slide into place. Listen for 'click' to ensure pole is locked into place.



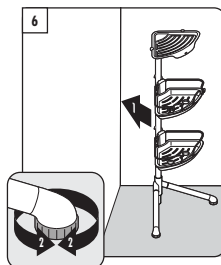
Twist feet if necessary to make sure they are face down.



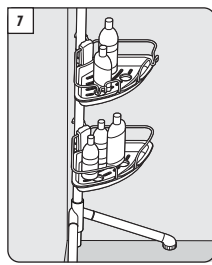
While Caddy is standing, hook Baskets around Pole and snap down to lock.



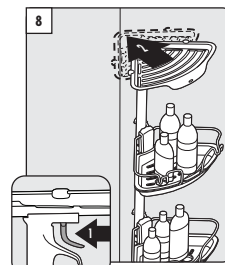
While squeezing lever, slide Top Tray (D) onto track. Limit overhang of tray off back of track.



Place Caddy in desired corner and adjust feet to balance.



Load bins with desired products and re-adjust feet to balance if needed.



Slide Top Tray back to wedge into shower corner for added stability.

⚠ WARNING

- Improper installation or failure to follow these instructions could result in injuries and/or property damage.